



CASPER | LARAMIE | SARATOGA | **ARVADA** | FT. COLLINS

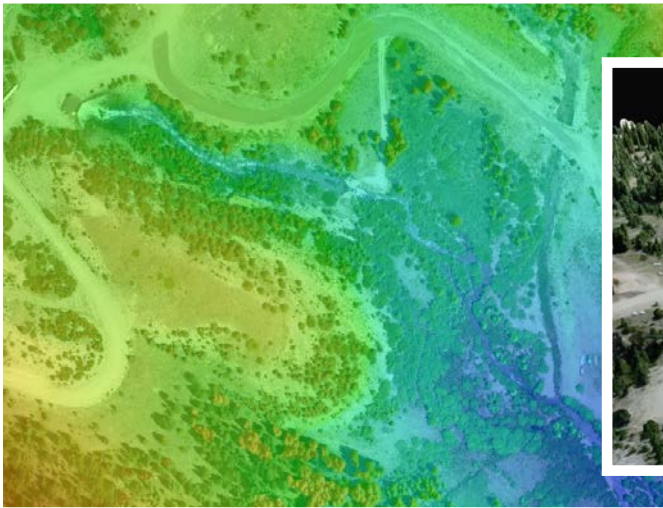
303.953.2255

www.2DOTconsulting.com



DRONE AND GIS SERVICES

drones • **environmental** • *engineering* • **water** | *soil* | **air** • *remediation* • **gis**



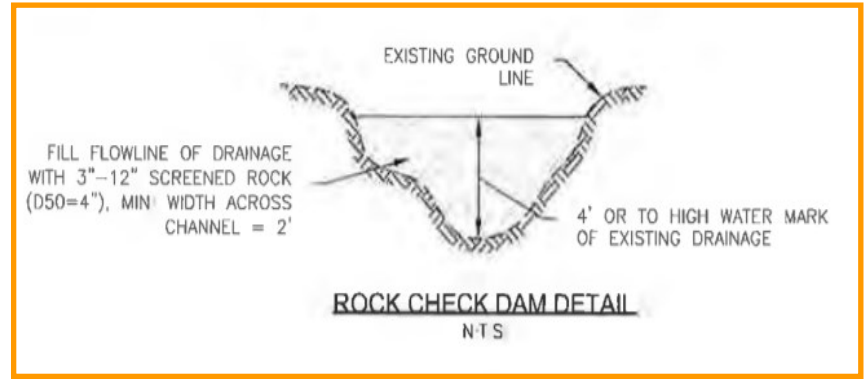
Collect, Analyze, and Share Accurate Data

2DOT's UAV aerial imagery service has no minimum altitude, allowing aerial oblique or directly vertical perspectives that can satisfy most, if not all, imagery needs. Drones offer a cost and time effective solution to a wide variety of projects.

2DOT uses its UAV imagery to provide orthorectified, high resolution imagery and 20+ megapixel stills. UAV imagery integrated with GIS analysis can provide percent coverage, volume, and area calculations as well as georeferenced 2D maps and 3D models.

2DOT Drone and GIS Services:

- Reclamation Monitoring—Pre/Post Disturbance
- Wildlife and Raptor Surveys
- Land-Use/Land Cover/Vegetation Mapping
- Equipment Inspections
- Aerial Imagery (high resolution)
- 3D Modeling & Map Making
- Stormwater Management & Inspections
- Area & Volume Calculations
- Noxious Weed Mapping and Surveys
- Visual Surveillance & Monitoring
- Wetland Survey Mapping
- Phase I and II Site Assessments



GIS Data Solutions

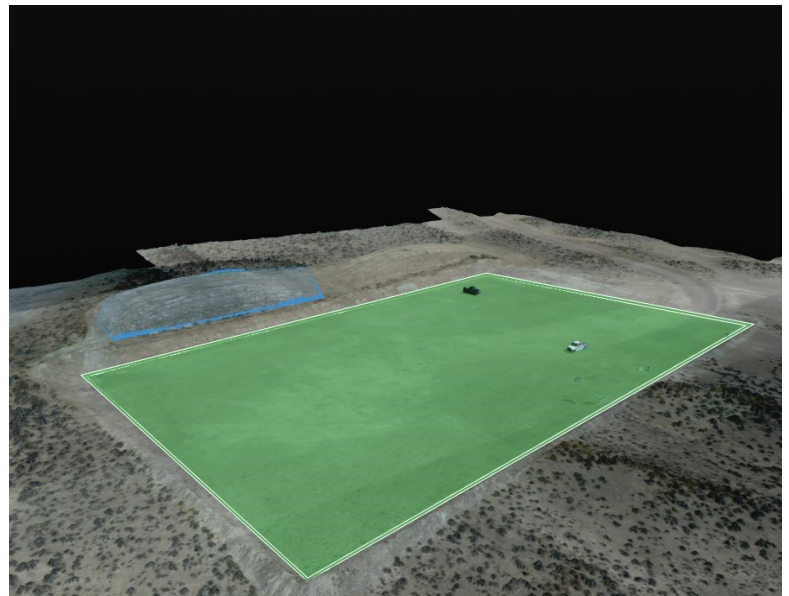
2DOT uses GIS to capture, store, manipulate, analyze, manage, and present all types of geographically-defined data and metadata. 2DOT incorporates a variety of processes to efficiently input new data, or migrate existing data, into our GIS Systems. Our staff has experience with the technologies and concepts that allow us to provide optimal solutions related to data integration, data analysis, mapping, and all facets of GIS application for every industry.

Typical GIS Data Sources

- Aerial imagery with drones
- Field data collection
- GPS collection
- Data migration (GIS to CAD; CAD to GIS)
- Existing databases, maps, drawings and other documents
- Electronic maps and drawings

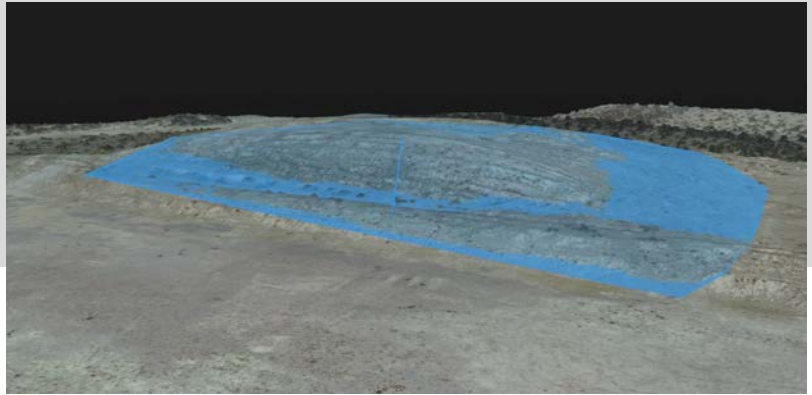
Typical GIS Deliverables

- Wetland delineations
- Stormwater Management Plans
- Database design & system configuration
- Database maintenance & implementation
- Data conversion and migration
- As-built drawing & model development
- Map and alignment sheet generation
- Mapping services
- Pipeline and utility routing and design
- Pipeline regulatory compliance
- Right-of-way and easements



UAV & GIS Project Experience:

- Pre and post-construction high quality aerial imagery for stream restoration
- Conservation easement baseline reports
- Stormwater regulatory inspections
- Reclamation progress on federal lands
- Stockpile soil volume and area calculations
- Website and marketing imagery
- Federally threatened, endangered, and sensitive species mapping
- Noxious and invasive weed mapping
- Wetland delineation reports
- Turnkey environmental regulatory compliance services
- Stormwater Pollution Prevention Plans (SWPPP)
- Stormwater Management Plans
- Database management for energy clients
- Georeferencing
- Wildlife habitat mapping



Qualifications:

- Commercial Remote Pilot Small Unmanned Aircraft System (UAS) License (FAA Part 107 Registration)
- 4K and 20-megapixel capable commercial UAV
- General liability insurance up to \$1,000,000
- Geospatial Information Systems Professionals
- Software: ArcGIS, ERDAS Imagine, Pix4D, Drone Mapper

CASPER | LARAMIE | SARATOGA | **ARVADA** | FT. COLLINS

307.333.3027

307.275.4074

307.326.3237

303.953.2255

970.413.4052