



Upstream and Midstream Services

2DOTconsulting.com



TWO DOT
A Montrose Environmental Company

Section 1 – Introduction & Company Overview	2
Introduction	2
Company Overview	2
2DOT Office Locations & Projects Completed	3
Section 2 – Upstream & Midstream Services	4
Site Location - Route Planning/Feasibility Studies	5
Alternatives Identification And Comparison	5
Environmental Permitting	5
Air Quality Permitting And Compliance Support	6
Emissions Monitoring And Reporting	6
Federal Lands And Agency Experience	7
NEPA Compliance	7
FERC Requirements	7
Approach To Safety	8
Section 3 – Upstream & Midstream Clients And Project Experience	9
2DOT Clients	10
Relevant Upstream & Midstream Project Experience	10
Section 4 – Services Overview	13
Environmental Planning And Project Management	14
Biological Resources	14
Reclamation	15
Remediation	15
Cultural Resources	16
Visual Resource Planning And Assessment	16
Land Use Planning	17
Environmental Compliance Inspections/Monitoring	17
Public Involvement And Communications	18
GIS And Advanced Information Technologies	18
Geographic Information System & Drones	19
Global Positioning System	19
Project Collaboration	19
Drones And Advanced Information Technologies	19

Introduction

Two Dot, A Montrose Company (2DOT) has prepared this Statement of Qualifications (SOQ) as an introduction of our firm’s capabilities to companies in the Upstream and Midstream industry. This SOQ is organized as follows:

- Section 1 – Introduction and Company Overview
- Section 2 – Upstream/Midstream Services
- Section 3 – Upstream/Midstream Clients and Project Experience
- Section 4 – Services Overview

Company Overview

2DOT is an interdisciplinary, environmental and engineering firm of more than 25 professionals based in Arvada and Windsor, Colorado, with two additional offices located in Wyoming.

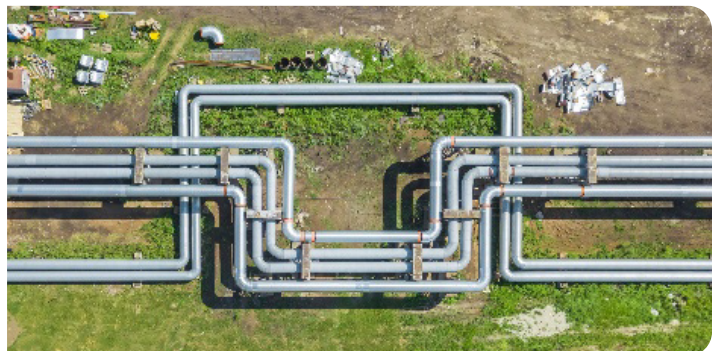
Our firm specializes in planning, permitting, compliance, environmental services (before, during, and after construction), remediation, and reclamation services for upstream and midstream development. We support proposed and existing upstream/midstream facilities, energy generation facilities, and other small to large-scale infrastructure projects.

Our services for Upstream development and operations include more than 3,400 well locations totaling 48,000 acres across CO and WY.

Our services for Midstream development and operations include more than 550 pipeline projects totaling 900 miles of pipeline across CO and WY. We have a proven track record in working with agencies, and extensive knowledge of federal, state, and local regulations that apply to pipeline and other linear energy facility siting/feasibility/permitting projects.

States 2DOT has completed Upstream & Midstream projects:

Colorado	Oklahoma
Wyoming	Texas
Utah	

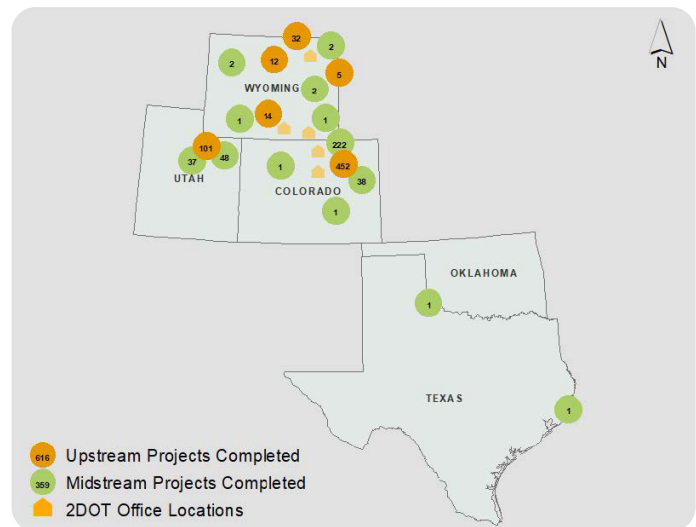


2DOT has conducted pre-construction environmental clearance surveys for Upstream and Midstream development including threatened and endangered (T&E) species, ROW siting and clearance, FERC permitting, wetland/waters of the U.S. (WOTUS) delineations/determinations, section 404 permitting, section 401 water quality permitting, section 106 surveys and permitting, construction monitoring, reclamation, and remediation.

Our key staff includes regulatory and permitting managers, environmental planners, environmental engineers, stormwater managers, wildlife biologists, botanists, rangeland managers, archaeologists, visual resource planners, geographic information systems (GIS) analysts, and stakeholder managers. We use an interdisciplinary approach, and our project team functions under the direction of senior staff with a combined 120 years of environmental consulting.

Our project managers are professionals who possess extensive and diverse experience with environmental planning, permitting, air compliance and inspection management and construction compliance services for pipeline and energy-related projects. Areas of expertise include:

- Experience working with county, state, and federal regulatory agencies
- National Environmental Policy Act (NEPA) and State Level Environmental Quality Act documentation and compliance (Environmental Impact Statements [EIS], Environmental Assessments [EA], and Categorical Exclusions)
- Public involvement and stakeholder relations
- Natural resource management
- Stormwater and reclamation planning and inspections
- Visual resource analysis
- Environmental compliance monitoring and inspections
- Air quality permitting and regulatory analysis
- Initial and ongoing air quality compliance and field inspection compliance



2DOT Office Locations & Projects Completed

States 2DOT has completed Upstream/ Midstream projects:	Midstream Projects completed	Full-time Employees	Miles of Midstream Projects completed
Colorado	262	365	652
Wyoming	80	220	163
Utah	86	187	201
Oklahoma	98	20	-
Texas	26	109	-
TOTAL	552	901	1,016

Upstream & Midstream Services



2DOT staff have provided siting, clearance surveys, permitting, and reclamation services for more than a combined 1,000 Upstream and 550 Midstream projects in the United States. Pipelines have ranged from 1 to more than 120 miles, and from 6 to 12 inches in diameter. We have also completed more than 200 other linear ROW, energy facility siting, feasibility, permitting projects, as well as roadway and transportation projects similar in permitting and clearance surveys necessary for pipeline projects.

Site Location - Route Planning/Feasibility Studies

Our team's experience in the siting and permitting of linear utility projects extends back more than 15 years. We have worked in all types of environmental settings throughout the western United States, ranging from densely populated urban areas to rural and agricultural lands and remote environments. Our project areas have spanned over 900 miles of pipeline on federal, state, municipal, tribal land, and private lands.

From our specific work with different agencies and jurisdictions, we have come to understand the importance of the regional and local environmental, land use/ownership, and socio-political issues and factors that may impact proposed pipeline routes. We apply this knowledge systematically and geographically to each specific setting and project during initial route planning and feasibility studies, and subsequently throughout the permitting and construction of energy-related facilities.

We firmly believe that a structured process for determining feasible or compatible locations for pipelines and the systematic and consistent comparison of alternatives is key to the overall success of any given project, including the selection of a preferred alternative. This process can range from cursory desktop evaluations using available resources to on-site assessments or windshield surveys that are used to identify, evaluate, and compare options. This process also identifies potential environmental risks and sensitive issues/areas associated with the project early on and to review project design and mitigation measures that can meet our client's business objectives. The identification and comparison process can be both qualitative and quantitative, and often considers applicable environmental resource information (existing and planned jurisdiction and use, biological and cultural resources, and visual resources), engineering and technical data, regulatory and permitting requirements, agency/public issues and concerns, and cost considerations.

Alternatives Identification And Comparison

Because of our experience, 2DOT is exceptionally competent in determining the types of information necessary to conduct environmental feasibility studies and using automated systems to assist in the acquisition and transfer of spatial and non-spatial data. We have an in-depth knowledge of both electronic and other data sources that are available through federal, state, and local agencies and routinely access this information when conducting routing and feasibility studies. We use drones to capture real-time digital aerial photography, GIS satellite imagery, digital elevation models, and field gathered information (mapped or global positioning system [GPS] data). This information is then imported into the GIS, digitized, and constitutes the database (layers) for the project.

Environmental Permitting

We provide the full range of permitting services required for taking a project from initiation and the submittal of right-of-way applications (e.g., Federal Standard Form 299 or Conditional Use Permits) through construction. Our permitting services include preparation of right-of-way applications, completion of necessary federal, state, county, and local permits, and the monitoring of construction activities (as required). We reduce the burden of environmental compliance and right-of-way permitting by providing information, support, and communication with those agencies that regulate projects during permitting and construction, and we routinely work with these agencies through the completion of projects. 2DOT has also prepared dozens of Plans of Development (PODs) and Construction, Operation, and Management Plans for energy clients on linear projects, including pipelines.

Air Quality Permitting And Compliance Support

2DOT can assist with all phases of the air permitting process. Our experienced staff has completed a variety of permitting projects with accuracy and efficiency. We specialize in New Source Review (NSR), Title V/Major Source and Tribal air quality permitting. Our permitting experience can provide clients with a process that is strategically designed for maximum flexibility, in order to streamline the permit process as well as ongoing compliance requirements. 2DOT can assist or manage the following client services, as needed:

- Regulatory applicability analysis
- Permit Strategy development
- Emissions quantification
- Permit application preparation
- Compliance management tools
- Compliance and Self-Certification assistance
- Control technology evaluations
- Emissions Reduction Credit assistance

Emissions Monitoring And Reporting

2DOT provides Leak Detection and Repair (LDAR) assistance for the energy and manufacturing industries. 2DOT's LDAR program management team is knowledgeable regarding the ever-changing LDAR regulatory requirements and has provided compliance, field support and program management to many facilities nationwide. Our LDAR experience includes applicability and compliance support for facilities subject to New Source Performance Standards (NSPS), National Emission Standards for Hazardous Air Pollutants (NESHAPS), Maximum Achievable Control Technology (MACT) and state specific requirements, including but not limited to:

- NSPS – 40 CFR 60, Subparts VV, VVa, KKK, OOOOa
- NESHAP – 40 CFR 61 F, J, V, and FF
- MACT – 40 CFR 63, Subparts HH
- RCRA – Subpart BB

2DOT's LDAR team performs gap assessments of facilities' LDAR programs, reviewing them for compliance with applicable requirements. We also facilitate the development and implementation of LDAR programs including the following tasks:

- Defining LDAR program and training requirements
- Acquiring equipment and providing the associated training
- Implementing monitoring equipment capable of logging data for upload to tracking software
- Assisting in software selection for long-term program compliance documentation
- Integration with multiple LDAR databases such as LeakDAS, FEMS, and GuideWare

2DOT also conducts third-party LDAR audits for clients in the chemical and energy industries. 2DOT has performed multiple third-party LDAR audits as required by client's Consent Decrees. 2DOT can provide professional training to support Audio, Visual and Olfactory (AVO), M22, M21 & LDAR inspections, as well as custom training for any other related topics.

Federal Lands And Agency Experience

Working with a wide variety of federal agencies, we have gained in-depth knowledge of federal regulations and guidelines, as well as a broad understanding of environmental issues and complexities associated with land administered or overseen by a variety of federal agencies. These agencies have included Federal Energy Regulatory Commission (FERC), Bureau of Land Management (BLM), U.S. Forest Service (USFS), Bureau of Indian Affairs, National Park Service, U.S. Fish and Wildlife Service (USFWS), Bureau of Reclamation, Environmental Protection Agency (EPA), and the U.S. Army Corps of Engineers (USACE).

NEPA Compliance

2DOT has prepared hundreds of environmental documents, including Environmental Reports (ER), Categorical Exclusions, Environmental Assessments (EAs), Biological Assessments (BAs), and Resource Management Plan Amendments (RMPAs) following NEPA guidelines. Through this experience, we have developed a thorough understanding of data requirements and systematic, procedural, and impact evaluation techniques that we tailor to the specific needs of each project. We have also gained an in-depth knowledge of regulations and guidelines and the environmental challenges often associated with energy-related projects.

The foundation of a successful EIS or EA starts with the development of a solid purpose and need statement, evaluation of alternatives, and a complete project description. We have experience in the preparation of a CATEX, EAs, and BAs that require the assimilation and adequate response of comments on these previous draft documents from agencies and the public. Also, 2DOT has worked closely with federal agencies such as the BLM, USFS, Bureau of Indian Affairs (BIA), and others in the development of the Records of Decision for completed EISs, and Decision Notices for EAs on numerous energy projects.

To complement our personnel's technical writing and review, we have a QA/QC document production team who has prepared hundreds of small and large-scale, multidisciplinary, comprehensive environmental documents. We also have the resources and equipment necessary to produce large, complex documents within tight project time-frames. 2DOT's staff is trained and experienced in word processing, reproduction, large-volume document binding, and graphic design/layout (in both Microsoft Office and Adobe Creative Suites).

FERC Requirements

2DOT has the experience, resources, and capability to coordinate and prepare ERs that satisfy FERC's implementation of NEPA under 18 CFR 380 (Appendix A), recent guidance manuals, as well as FERC orders. We have supported applicants in both the pre-filing process and the traditional filing process for proposed projects.

2DOT has prepared resource reports for FERC filings (including a listing of all publications or communications cited), and is available to initiate and complete any of the following:

- Resource Report 1: General Project Description
- Resource Report 2: Water Use and Quality
- Resource Report 3: Fish, Wildlife and Vegetation
- Resource Report 4: Cultural Resources
- Resource Report 5: Socioeconomics
- Resource Report 6: Geological resources
- Resource Report 7: Soils
- Resource Report 8: Land Use, Recreation, and Aesthetics
- Resource Report 9: Air and Noise Quality
- Resource Report 10: Alternatives
- Resource Report 11: Reliability and Safety
- Resource Report 12: PCB Contamination

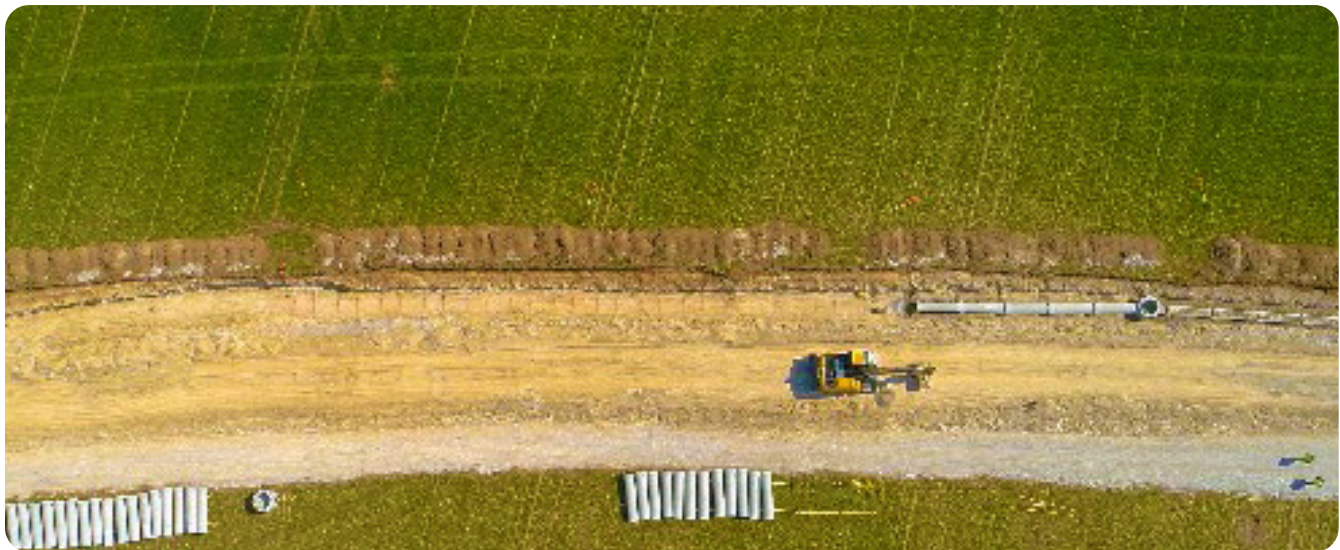
Approach To Safety

2DOT is committed to business practices, operations, and projects that protect people and the environment. We have the necessary experience in complying with the Occupational Safety and Health Act, particularly Section 8, which covers the reporting and project safety requirements.

2DOT has established procedures that provide direction on health and safety matters to all employees and others involved. The goal of the 2DOT Health and Safety Program is zero accidents; therefore, accident prevention is of paramount importance. To this end, safety takes precedence over expediency. We are committed to compliance with all client health, safety, and environmental requirements and regulations. Our safety stats since 2014 confirm our commitment to safety.

No Recordable Injuries:

Man Hours	Miles Driven	Full-time Employees	States 2DOT Has Worked In	OSHA Citations	OSHA 300A Score
163,000+	562,000+	25+	17	0	0



Upstream & Midstream Clients and Project Experience



2DOT staff has experience in providing environmental and engineering consulting services for multi-state pipelines and other energy projects in the various lower 48 states, as well as Alaska. This section includes a representative list of some of our clients and project experience.

2DOT Clients

Pipeline and oil and gas clients of 2DOT:

- Anadarko Petroleum
- Anschutz Oil Corporation
- Bayswater E & P
- Black Hills Energy (WY & CO)
- Black Mountain
- Bison IV Operating
- Chevron
- Cinco Natural Resources
- Civitas Resources
- EOG Resources, Inc.
- Fidelity Exploration and Production Company
- Incremental Oil and Gas
- Koch Industries
- Marathon Oil Company
- Marathon Midstream
- Monarch Natural Resources
- Occidental Petroleum Corporation
- PacifiCorp
- Pioneer Natural Resources
- Rocky Mountain Power
- Western Interior Oil and Gas
- Xcel Energy

Relevant Upstream & Midstream Project Experience

The following are brief descriptions of several current and past pipeline projects on which 2DOT and our staff have worked.

Occidental Petroleum Corporation (Colorado and Wyoming)

2DOT has been the primary on-call environmental service provider for Occidental Petroleum since 2015 and has assisted on over 800 pipeline projects and 120 in 2022. 2DOT has been responsible for pre-construction planning and site clearance surveys, including T&E species, raptors, cultural and wetlands WOTUS delineations, and determinations. 2DOT has completed countless U.S. Army Corp of Engineers (USACE) permitting obligations, including pre-construction notifications and conditions of approval requirements for the client across the front range in Adams, Arapahoe, Larimer, Boulder, and Weld County.

Civitas Resources (Colorado)

On-call environmental services and daily compliance / operations for over 4,200 locations since 2019:

- Dewatering permits
- Spill Control and cleanup
- SPCC Compliance and Engineering
- Wetland/WOTUS delineations/determinations
- Wetland section 404 permitting
- Stormwater management plans (SWMP)
- SWMP management
- SWMP inspections
- SWMP Best Management Practices (BMPs)
- Reclamation plans
- Reclamation implementation
- Data management
- Weed management and spraying

2DOT has partnered with Civitas to ensure regulatory compliance for new and existing projects in Colorado. 2DOT developed a cost-effective plan addressing construction impacts and sustainable development. Our approach and recommendations prevent costly and lengthy permitting requirements and added costs. Our approach is to present the long-term cost savings and establish a beneficial relationship between our clients and agencies.

Cinco Natural Resources Corporation (Wyoming)

2DOT was CNR's environmental and engineering consultant for a large POD that involved NEPA, BLM On-shore Order compliance, and intense fieldwork for siting and planning in northeast Wyoming. 2DOT completed the following:

- Aerial and on-foot wildlife and vegetation surveys to comply with BLM and WY Game and Fish Department.
- 32 Biological Assessments for the BLM.
- 32 Class I and III inventory/reports
- 32 APD's, SUPO's, and Reclamation plans
- Aerial surveys for a large scale (97,593 acres) of Greater Sage-grouse survey area.
- Density Disturbance Calculation for Greater Sage-grouse planning and development.
- Siting, ROW surveys, and permitting for 16-mile gathering pipeline to facilitate 32 well operations.

Chevron / PDC Energy (Colorado + Utah)

2DOT has worked with PDC since 2015 and has been an on call environmental and engineering consultant for many large-scale expansive midstream and upstream development projects.

- 2DOT holds all UTE Tribe Business Licenses and Access permits to conduct fieldwork in the Uintah Basin.
- 2DOT holds all USFWS certifications to conduct all rare plant surveys for:
 - Barneby ridge-cress (endangered)
 - Uintah basin hookless cactus (threatened)
 - Ute ladies'-tresses (threatened)
 - Noxious weeds (State and County listed)
- 2DOT holds all USFWS certifications to conduct protected bird surveys for:
 - Yellow-billed Cuckoo
 - Mexican Spotted Owl
 - Southwestern Willow Flycatcher

2DOT has conducted hundreds of BLM sensitive wildlife surveys, T&E species, rare plant, and migratory bird clearance surveys to facilitate tight deadlines and survey windows. 2DOT cleared over 187 miles of pipelines and 86 pipeline locations located on the state, tribal, and BLM land in Uintah and Duchesne County, Utah. Following USFWS and BLM protocol surveys, 2DOT conducted pedestrian surveys for rare plants as well as mapped and prepared noxious weed management plans. 2DOT negotiated survey protocol for soil sampling and vegetation surveys for tribal and BLM representatives that minimized the effort and cost for a large-scale reclamation project.

Monarch Natural Gas (Utah, Texas, and Oklahoma)

2DOT facilitated approval of the 46-mile FERC pipeline permit application and associated reports from Lipscomb and Hemphill Counties, Texas, to Roger Mills County, Oklahoma. The project included 38 wetland crossings, 12 landowners, 12 Federal and State agencies, and nine (9) contractors. 2DOT performed the following tasks and received concurrence of all Environmental Resource reports ahead of the anticipated schedule and under budget. The primary tasks for this project included:

- Biological clearance surveys
- Critical Issues Analysis
- Formal Agency Consultation
- Formal Letter Requesting Agency Concurrence
- Identification of Impacts to Jurisdictional Waters of the United States
- Environmental Resource Reports

2DOT worked with the following agencies for project concurrence:

Federal Agencies

- U.S. Army Corps of Engineers (USACE)
- U.S. Fish and Wildlife Service (USFWS)
- U.S. Environmental Protection Agency (USEPA)
- Tribal Governments –Native American Tribes/Nations

State Agencies

- Texas Parks & Wildlife Department (TPWD)
- Texas Historical Commission (THC)
- Railroad Commission of Texas (TRRC)
- Texas Commission on Environmental Quality (TCEQ)
- Oklahoma State Historic Preservation Office (SHPO)
- Oklahoma Archeological Survey
- Oklahoma Department of Environmental Quality (ODEQ)
- Oklahoma Department of Wildlife Conservation

Williams Overland Pass Pipeline Monthly Stormwater BMP Inspections (Colorado and Wyoming)

2DOT conducted monthly stormwater BMP inspections for the Williams Overland Pass Pipeline Wyoming Mainline and Piceance Lateral Segments. Work included monitoring the effectiveness of over 5,000 BMPs, the identification of critical areas, the percentage of re-vegetative, and the presence of noxious weeds along approximately 255 miles of the pipeline right-of-way; as well as preparation of daily, weekly, and monthly inspection reports; and coordination with Williams Mid-Stream Gas & Liquids staff. BMPs, critical areas, and the percentage of re-vegetation was mapped using GPS and GIS. Maps were produced in GIS, as well as in a KMZ/Google Earth format.

Services Overview



2DOT conducts and manages the planning, environmental studies, field investigations, permitting and monitoring required for siting, permitting, environmental compliance monitoring, and reclamation of pipeline projects and energy-related infrastructure. An overview of the services we provide to the pipeline and utility industry is in this section.

Environmental Planning And Project Management

2DOT manages projects of all scales and degrees of complexity, from feasibility studies to situations highly complicated by public interest, land ownership, environmental issues, and engineering requirements. Our success is based on experience obtained over many years, including:

- Planning, environmental analysis, and public participation studies
- Interdisciplinary project management
- Site analysis, planning, and facility permitting and licensing
- Environmental construction monitoring and inspection
- Stormwater management
- Weed management/ Licensed herbicide application
- Site reclamation, earthwork, BMPs, and monitoring



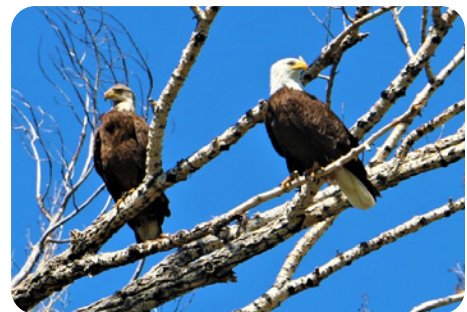
We have developed a thorough command of data requirements and systematic, replicable, and defensible impact evaluation techniques appropriate for many different types of projects, providing our clients with success in efficiently planning, permitting, and implementing their projects. Working with a variety of agencies in numerous states, we have gained an in-depth knowledge of federal and state regulations and guidelines and a broad understanding of environmental issues and challenges associated with land administered or overseen by federal, state, and local agencies. This knowledge and understanding allow us to help our clients identify realistic and (if needed) aggressive timeframes and cost-effective strategies for completing their projects. We are committed to an approach that reduces delays in project planning, avoids confusion and uncertainty among the public and review agencies, and helps develop appropriate and practical solutions.

Biological Resources

2DOT biologists have provided biological support in connection with NEPA analyses, permitting, and compliance monitoring on a wide variety of projects throughout the United States.

Our biologists routinely interact with proponents and federal and state agency biologists. We coordinate with state and federal resource managers to identify and resolve site-specific biological issues of concern, provide support to federal agencies and proponents during Section 7 ESA consultation, Bald and Golden Eagle Protection Act, and develop habitat conservation plans and mitigation plans to avoid and minimize impacts to trust resources. Our biological services include:

- Plant, animal, and fisheries baseline inventories
- Big game investigations employing radio-telemetry and aerial surveys
- Sage-grouse and other sensitive species investigations, impact assessment, and conservation planning in accordance with state and federal instructional memoranda and guidance



- Bald and golden eagle + raptor nesting and monitoring surveys
- Avian and bat protection plans
- Sensitive, threatened, and endangered plant and animal species surveys
- Plant community analysis, classification, and mapping surveys
- Wetland delineations
- Clean Water Act - Section 404 permitting, mitigation planning, and monitoring
- Upland habitat restoration/mitigation planning, implementation, and monitoring
- Weed management plans
- Compliance inspections during construction and maintenance operations
- Expert testimony

Reclamation

2DOT provides reclamation planning and earthwork services, from soil enhancement to the development of mitigation and reclamation plans to the supervision of reclamation activities and post construction monitoring. 2DOT's range of site reclamation services includes:

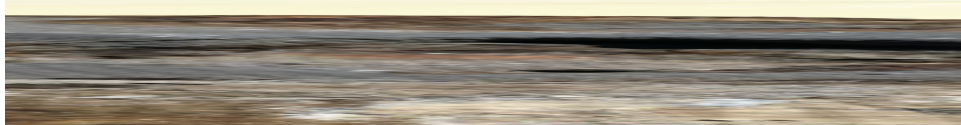
- Reclamation planning and design
- Earthwork and soil preparation
- Topsoil salvage assessment and management
- Site grading and drainage plans
- Hydro-mulching
- Plant inventory, salvage, and relocation planning
- Reclamation oversight and monitoring
- Weed management planning
- Herbicide application
- Post-construction vegetation monitoring
- Preparation and implementation of Stormwater Pollution Protection Plan (SWPPP) and inspections
- Surface water management
- Seed mix development
- Supplemental planting design
- Stream restoration (linear stabilization for crossings)
- Wetland restoration
- Noxious and invasive weed mapping
- Weed management and licensed herbicide application



Remediation

2DOT provides remediation planning (and rapid response), liquid and solid waste collection/sampling, and earthwork services. From soil extraction to the development of mitigation and pit closure plans, we provide turnkey services for EPA and state agency coordination and offsite disposal. 2DOT will execute and facilitate

removal and proper disposal of liquid and solid waste contaminants and begin the reclamation process so you can close out your SWMP and Discharge Permit System (DPS) general permits.

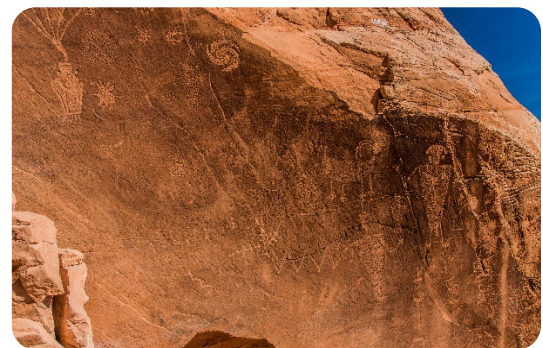


Results that exceeded regulatory criteria	Cuttings Pit	ECMC 910-1	
		Limit	& over
Total Petroleum Hydrocarbons as Diesel (TPH-DRO) (mg/kg)	4130	500	826
Arsenic (ug/kg)	16.5	0.39	4,231

Cultural Resources

Understanding the application of environmental and cultural resource laws to specific projects is one of 2DOT's many strengths. The range of cultural services for pipeline projects includes:

- Knowledge of federal, state, and local historic preservation legislation and regulations
- Class I inventory, Class III pedestrian survey
- Archaeological monitoring, protection, testing, and data recovery
- Treatment planning and mitigation
- Cultural resource assessments
- Curation
- Construction monitoring
- Coordination with both state and federal agencies
- Native American and tribal involvement programs
- In-house laboratory facilities
- Expert testimony



Visual Resource Planning And Assessment

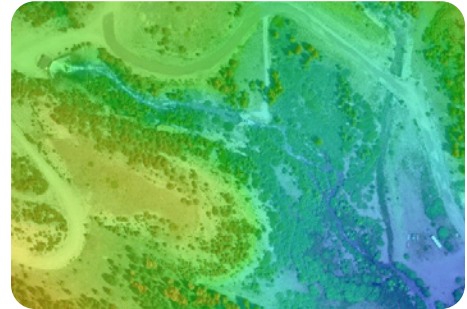
It has been our experience that visual resource concerns are among the most controversial issues associated with pipeline and energy-related projects. 2DOT maintains relationships with the largest group of trained visual resource specialists in the industry. We have teamed on more than ten visual analyses for significant pipeline and energy-related facilities, including natural gas pipelines, generation facilities, electric transmission lines, roads, and telecommunication facilities.

2DOT offers our clients a full range of technologies to promote efficiency, quality control, and turnaround time and improve the integration of visual studies with interdisciplinary resource and engineering studies.

Visual simulations with drones have proven a valuable tool in communicating with our clients, agencies, and the public. We can provide realistic, high-resolution simulations of pipeline projects and reclamation for use in environmental documentation, public relations, and legal evidence.

Our visual resource services include the following:

- Baseline inventories and impact assessments, including use of federal visual resource management systems (e.g., USFS, BLM)
- Visual perception and attitude surveys
- Computer viewshed analysis
- Visual simulations of proposed projects using computer graphic and video image processing techniques
- Video documentation of site conditions, study products, and meetings
- Mitigation planning and design analysis
- Landscape restoration and reclamation planning and design
- Expert testimony



Land Use Planning

2DOT has a long history of working on ranches throughout Wyoming and Colorado and understand how to grow and maintain relationships. We have been assisting our clients with land use issues and methods of obtaining the necessary right-of-way approvals and permits. We have conducted land use studies for projects in conjunction with private, city, county, and regional planning departments and have worked closely with developers to integrate planned projects into existing settings while maintaining compatibility with long-range plans. Our land use experience focuses on conducting land use analyses for NEPA compliance and federal, state, county, municipal, and local permits. Land use services we routinely provide for clients include:

- Photo and aerial interpretation (with or without drones)
- Existing and planned land use inventories
- Land use impact assessments
- Mitigation planning and design
- Preparation of land use permits/conditional use permits
- Preparation of zoning and rezoning applications
- Right-of-way acquisition assistance
- Expert testimony

Environmental Compliance Inspections/Monitoring

2DOT offers environmental compliance inspection/monitoring services for a wide variety of development projects, including pipeline and other energy-related projects.

We utilize the expertise of 2DOT's diverse interdisciplinary group of specialists to design and implement comprehensive inspection programs to maintain compliance with lease stipulations, statutory requirements, and project-specific development plans.



Since 2014, we have provided construction-monitoring services on more than 45 projects. We understand client concerns and strive to guide projects through to their successful and timely completion in compliance with federal, state, local, and tribal regulations. Our environmental monitoring and inspection services include the following:

- Pre-construction inventories of all sensitive resources
- Construction inspection contractor services
- Environmental training (including the production and distribution of field manuals, safety training sessions)
- Surveys/reports for cultural resources, threatened and endangered species, protected wildlife/plants
- Monitoring for soil stabilization, erosion and sedimentation control, and reclamation and revegetation
- Preparation and submittal of stormwater management plans (SWPPP/SWMP)
- Routine stormwater inspections
- Multidisciplinary staff fully equipped to respond quickly to cultural resource discoveries and other environmentally sensitive situations

Public Involvement And Communications

We have a realistic and clear understanding of the heightened public and agency interest that is often associated with proposed pipeline projects and how the level of concern regarding these projects can affect the permitting process. We also recognize the importance of understanding the roles of agencies and municipalities in public outreach and the need and often mandated requirement for public involvement in the siting and permitting of these projects. 2DOT has implemented hundreds of public and agency involvement programs to facilitate regulatory agency approval, NEPA compliance, and permitting for projects. We have successfully employed a variety of communication tools and techniques, including:

- Public meetings and workshops (including meeting arrangements)
- Community working groups/advisory groups/stakeholder groups
- Newsletters/fact sheets
- Comment forms
- Websites
- Telephone information lines
- Display or legal advertisements (noticing project or public meetings)
- Press releases and other media coordination (including meeting with, or responding to reporters)

By using these methods to inform and educate the public about a project, we gain support for the planning process, even if the project itself is not supported. We develop a comprehensive project-specific communications strategy employing a combination of these tools in a specific sequence to meet the needs of each project before initiating contact with the public. Our experience indicates this approach is essential and useful in demonstrating to permitting authorities that the public was informed, involved, responded to, and considered throughout the project.

GIS And Advanced Information Technologies

2DOT staff has been a leader in applying information technology (IT) in the environmental and utility industry over a combined 20 years. 2DOT's IT group of multidisciplinary professionals specializes in the application of drones, GIS, computer-aided design (CAD), database management, application development, document and content management, visual simulations/animations, GPS, graphic design, and systems administration. Our IT group understands the challenges associated with the collection, integration, management, and distribution of large amounts of complex data in an efficient, understandable, usable, and timely manner to our clients and agencies.

Geographic Information System & Drones

We have used GIS and drones as a critical data development, analysis, and cartographic mapping tool on numerous energy facility siting, NEPA compliance, land use planning, environmental management, environmental restoration, transportation planning, telecommunication, and construction management projects. Today, we are a full-service group providing GIS services from project design and implementation to custom application development and training.

2DOT maintains a complete selection of industry-standard GIS and related software packages. Our primary GIS platform is the ESRI ArcGIS products, including web-mapping, ArcGIS Pro, and ArcGIS Online.

Global Positioning System

2DOT uses GPS technology within our environmental planning projects to support the accurate and timely collection of environmental resource data. Our IT group has extensive experience with GPS and provides mission planning, post-processing, and training to our cultural, biological, and other environmental specialists conducting data collection. Through successful mission planning and development of data dictionaries, our GIS group can integrate field data automatically, eliminating digitizing efforts, and reducing field time. 2DOT also provides integrated GPS, ESRI ArcPad, or Trimble Terrasync solutions to provide a field-based extension of our GIS capability that incorporates vector mapping, aerial photography, and satellite imagery.

Project Collaboration

To help ensure the distribution and access to crucial environmental information related to our projects, 2DOT uses Microsoft SharePoint, as desired by the client/agency. SharePoint allows 2DOT to maintain a dynamic web-based repository of reports, maps, and other information, giving our clients and agencies secure access to the most up-to-date project data. SharePoint centralizes data access, improves organization file sharing and workgroup collaboration, and facilitates reviewing, data archiving, and transferring of this information among the core project groups.

An example of project information stored on a SharePoint includes the following:

- Draft and final deliverables
- Engineering design and specification data pertaining to a permitting document (e.g., EIS)
- Project contacts
- Project schedule
- Resource study plans and project management plans
- Meeting agendas and summaries
- Mapping products
- Graphics/photos

Drones And Advanced Information Technologies

2DOT Drone capabilities range from thermal imagery using FLIR Systems to imagery collection using a 180°, 21-megapixel (MP) camera with a 3x zoom for Hyperlapse mode. Whether it is a rapid response to an emergency, surface data acquisitions, impervious surface mapping, or land use vegetation mapping, we have it covered.

Unmanned aerial vehicle (UAV) imagery service has no minimum altitude, allowing aerial oblique or directly vertical perspectives that can satisfy most, if not all, imagery needs.

We use UAV imagery to provide orthorectified, high-resolution imagery, and over 20MP stills. UAV imagery integrated with GIS analysis can provide percent coverage, volume, and area calculations as well as georeferenced 2D maps and 3D models.



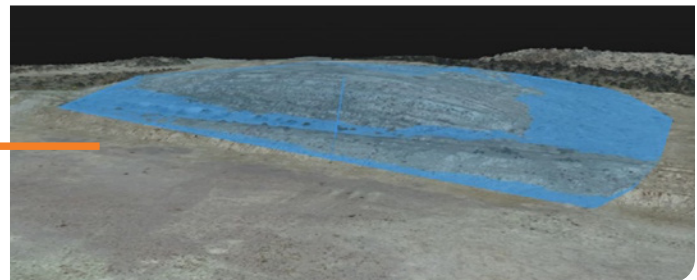
Collect, Analyze, And Share Accurate Data:

- Reclamation monitoring (Pre/Post Disturbance)
- Wildlife and Raptor Surveys
- Land-use/Land cover/Vegetation Mapping
- Equipment inspections
- Aerial Imagery (high resolution)
- 3D Modeling & Map Making
- Stormwater Management & Inspections
- Area & Volume Calculations
- Noxious Weed Mapping and Surveys
- Visual Surveillance & Monitoring
- Wetland mapping
- Wetland Survey mapping
- Phase I and II Site Assessments



Topsoil Stockpile calculation taken from Drone

- Area: 0.59 acres
- Volume: 4,908 cubic yards
(PIX4D = 5,189 cubic yards +/- 67 cubic yards)



Qualifications and Software

- Pre/Post-construction high quality aerial imagery for stream restoration
- Conservation easement baseline reports
- Stormwater regulatory inspections
- Reclamation progress on federal lands
- Stockpile soils volume and area calculations
- Website and marketing imagery
- Federal T&E species habitat mapping
- Noxious and invasive weed mapping
- Wetland delineation reports
- Turnkey environmental regulatory compliance services
- SWPPP
- SWMPs
- Database management for onshore oil and gas clients
- Georeferencing
- Wildlife habitat mapping

Qualifications

- Commercial Remote Pilot Small Unmanned Aircraft System (UAS) License (FAA Part 107 Registration)
- 4K and 20-megapixel capable commercial UAV
- General liability insurance up to \$1,000,000
- Geospatial Information Systems Professionals
- Software: ArcGIS, ERDAS Imagine, Pix4D, DroneMapper